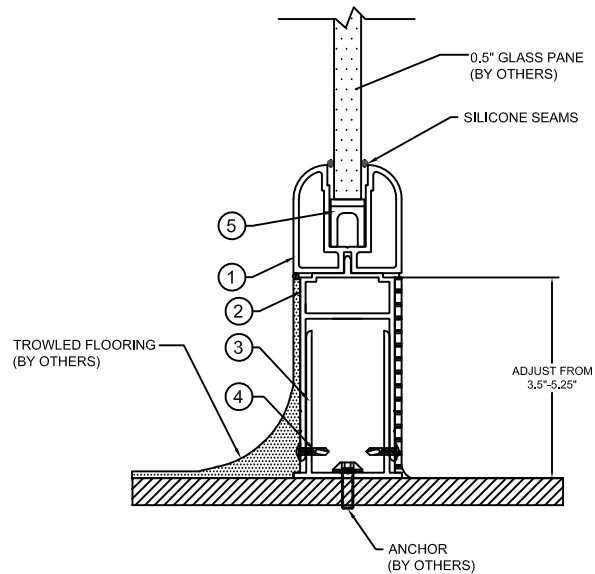


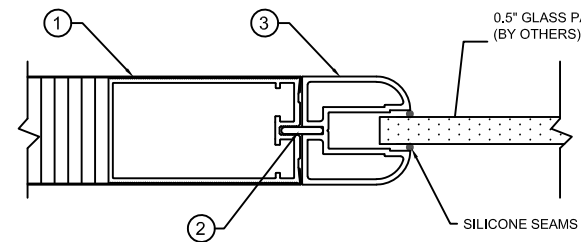
1A HEADTRACK
GLASS WALL SYSTEM

6	1	M0859	HEADTRACK	UPVC
5	3	0120525	SELF DRILLING SCREW	-
4	1	VARIES	2" CEILING PANEL	UPVC
3	1	E0013	ALUMINUM COVE BASE (FASTENER SPACING- 24")	MILL
2	1	E0015	PVC COVE	SNOW
1	1	E0096	GLAZING EXTRUSION	SNOW
No. Qty	Item	Description	Finish	



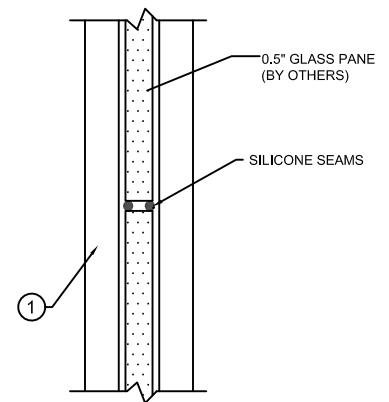
1B FLOORTRACK -COVE 1 SIDE
WINDOW WALL

5	1	36120	GLAZING SETTING BLOCK (3 per 4')	-
4	2	0120525	SELF DRILLING SCREW	-
3	1	E0045	FLOORTRACK BASE	MILL
2	1	E0044	FLOORTRACK COVER (FASTENER SPACING- 24")	MILL
1	1	E0096	WINDOW EXTRUSION	-
No. Qty	Item	Description	Finish	



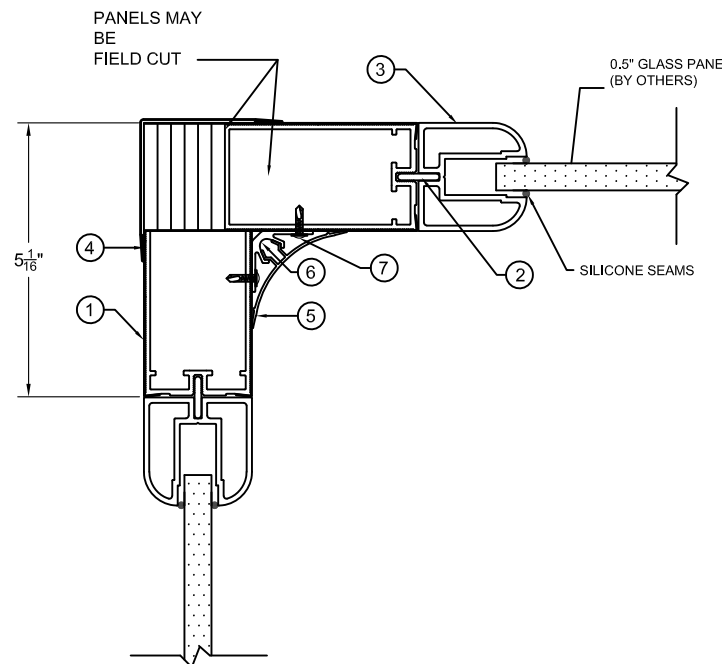
1C WALL-TO-WALL CONNECTION
GLASS WALL

3	1	E0096	GLAZING EXTRUSION	SNOW
2	1	-	CONTINUOUS SPLINE	-
1	1	-	2" WALL PANEL	UPVC
No. Qty	Item	Description	Finish	



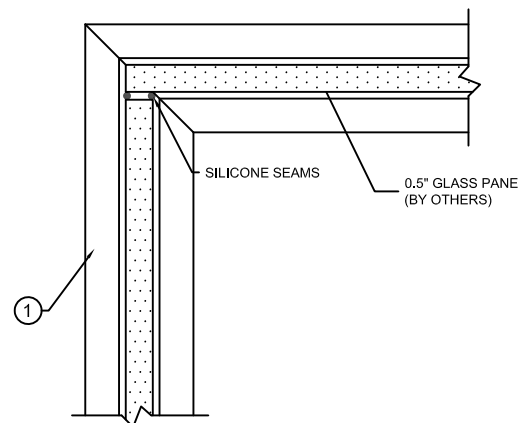
1D GLASS WALL SEAM

1	1	E0096	GLAZING EXTRUSION	SNOW
No. Qty	Item	Description	Finish	



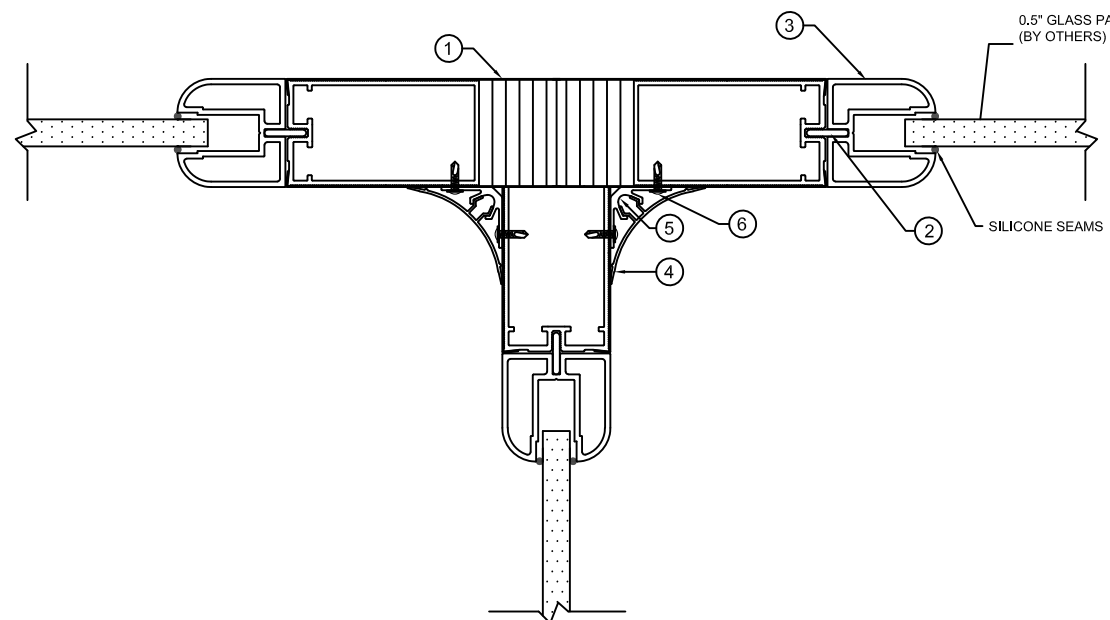
1E CORNER CONDITION
GLASS WALL

7	2	-	SELF DRILLING SCREW	-
6	1	-	ALUMINUM COVE BASE	MILL
5	1	-	PVC COVE	SNOW
4	1	-	OUTSIDE CORNER COVER	SNOW
3	1	E0096	GLAZING EXTRUSION	SNOW
2	1	-	CONTINUOUS SPLINE	-
1	2	-	2" WALL PANEL	UPVC
No. Qty	Item	Description	Finish	



1F CORNER GLASS TO GLASS
GLASS WALL

1	1	E0096	GLAZING EXTRUSION	SNOW
No. Qty	Item	Description	Finish	



1G WALL START CONDITION
GLASS WALL

6	2	-	SELF DRILLING SCREW	-
5	1	-	ALUMINUM COVE BASE	MILL
4	1	-	PVC COVE	SNOW
3	3	E0096	GLAZING EXTRUSION	SNOW
2	3	-	CONTINUOUS SPLINE	-
1	2	-	2" WALL PANEL	UPVC
No. Qty	Item	Description	Finish	