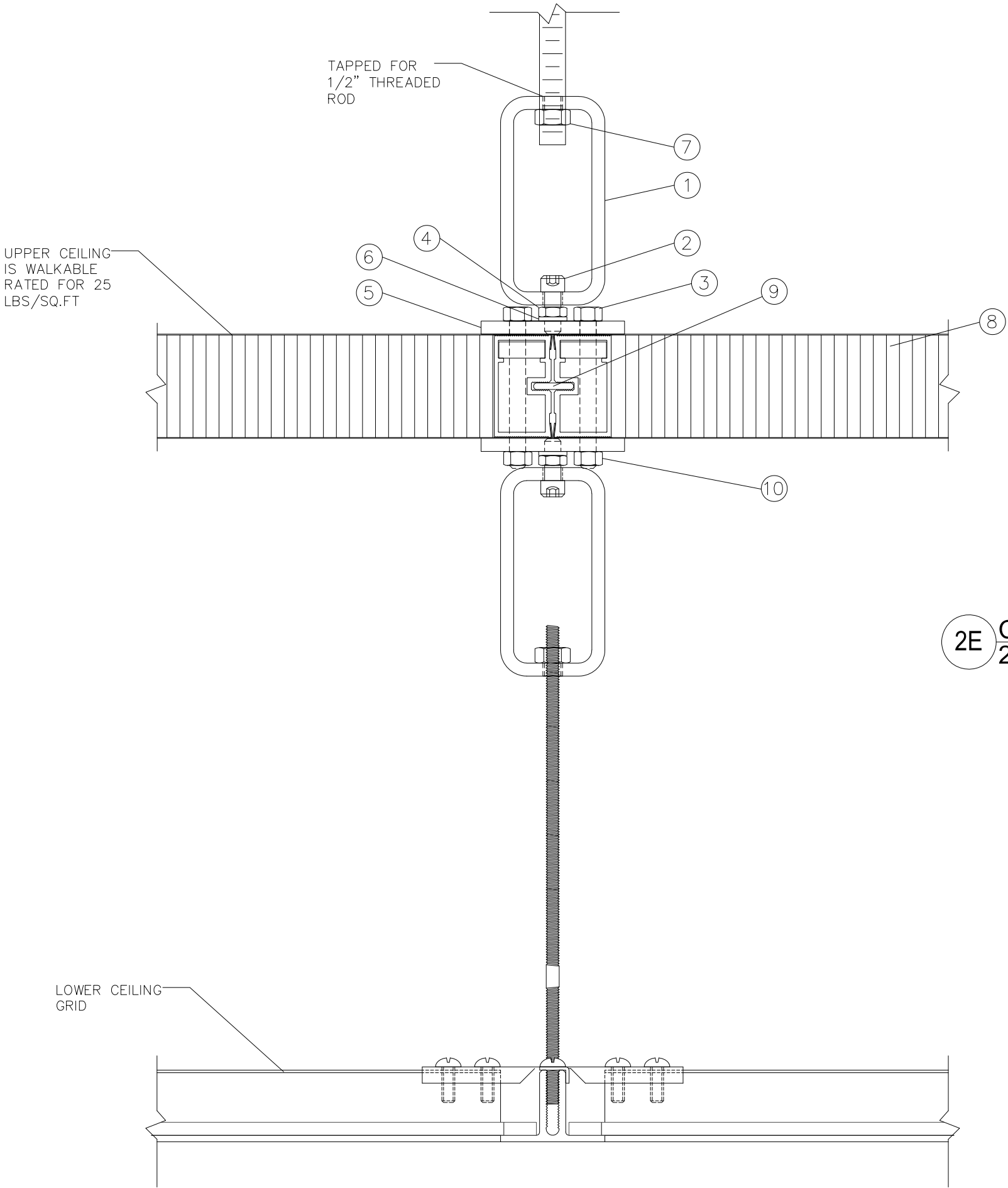


REV.	DATE	DESCRIPTION	SIGNATURE
------	------	-------------	-----------



10	4	-	5/16"-18 LOCK NUT	ZINC
9	1	-	ALUMINUM CONTINUOUS SPLINE	-
8	1	-	2" CEILING PANEL	UPVC
7	2	36108	1/2"-13 LOCK NUT	ZINC
6	10	840682	5/16" LOCK WASHER	ZINC
5	2	M0758	4-WAY TURNBUCKLE PLATE	ZINC
4	2	36110	JAMB NUT, 5/16-18 (3/16" THICKNESS)	ZINC
3	4	-	GRADE 5, 5/16"-18 X 3" HEX HEAD CAP SCREW	ZINC
2	2	1126326	SHOULDER BOLT 3/8UNC X 3/8	-
1	2	C0006	TURNBUCKLE TUBE	ZINC

No.	Qty	Item No.	Description	Finish
UNLESS OTHERWISE SPECIFIED, DIMENSIONS ARE IN INCHES AND TOLERANCES ON: [XXXXX] = CRITICAL DIM LEVEL 2 [XXXXX] <sup>3</sup> = CRITICAL DIM LEVEL 3 FRACTIONS: = ± 1/16 DECIMALS: X=±0.1 .X=±0.06 .XX=±0.03 .XXX=±0.01 ANGLES: = ± 2'				
PLASCORE 615 N. FAIRVIEW STREET ZEELAND, MICHIGAN 49464 (616) 772-1220				
DWG TITLE: PLASCORE PHARMACEUTICAL SYSTEM				
SIZE	FSCM	DWG NUMBER:	REV	
A	39212		-	
DRAWN BY: M.DEFER			DATE: 4/25/17	
ENGRG: -			SCALE: NTS	
CAD#:			SHEET: 1 OF 1	